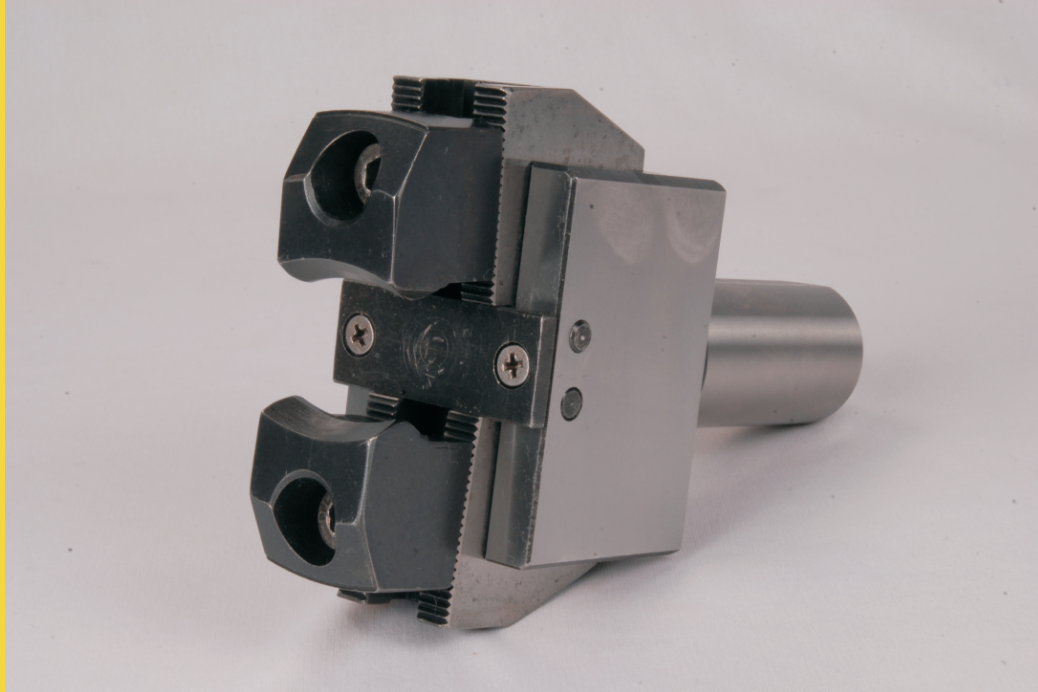




BAR PULLERS (FOR CNC LATHES)



FEATURES:

‘KTA’ BAR PULLER is unique with bar pulling capacity from 6.0mm to 50.0mm.

This occupies only one station in the Turret.

This is very good for small to medium sizes batch production.

In many cases you can avoid bar feeders which occupies lot of space.

This is available in standard cylindrical dia 20, 25, 32, & 40 as per DIN 1835 B+E (VDI & spl mounting on request).

Please go through the schematic diagram which shows the simplicity of the holder function .

Most suitable for CNC Lathes ; CNC Turn-Mill Centers .

KTA Spindle Toolings

Works : 246/9, Hinjewadi, Near Tata Jhonson,

Tal. Mulshi, Dist. Pune. Pin - 411 057.

(MAHARASHTRA) INDIA

Tel. Works : 020 -64001283, 22934198, 20270680.

Fax Works : 020 - 66740038,66740039

E-mail : info@ktaspindletoolings.com

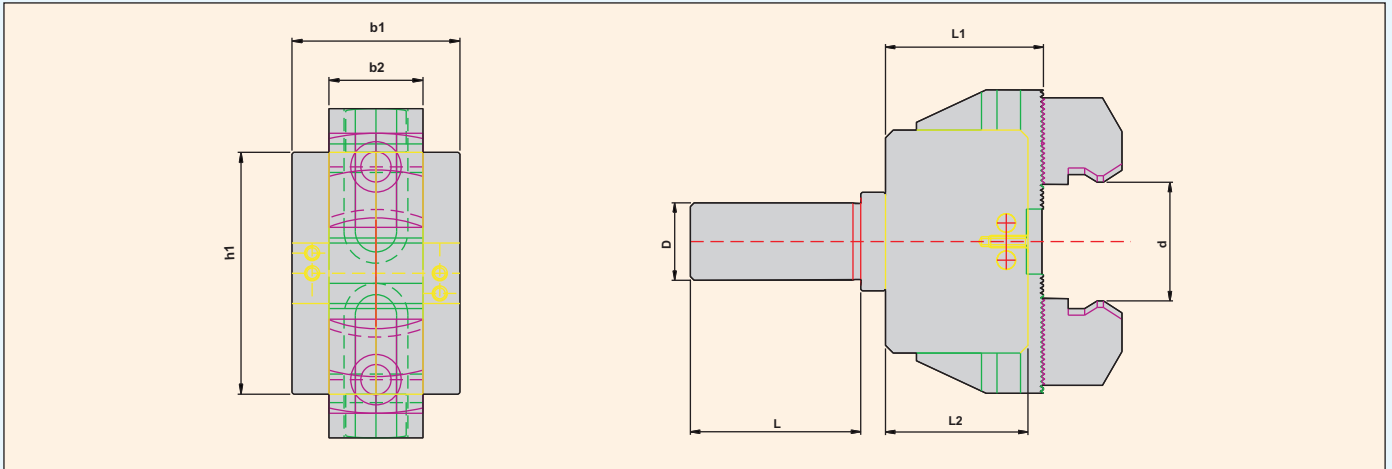
sales@ktaspindletoolings.com

exports@ktaspindletoolings.com

Visit us at : www.ktaspindletoolings.com



BAR PULLER



BAR PULLER	d	D	L	L1	L2	b1	b2	h1
DIA.25 BAR PULLER	6-50	25	55	51	46	50	28	72
DIA.32 BAR PULLER	6-50	32	55	51	46	50	28	72

'D': DIFFERENT SHANKS LIKE DIA40, VDI30, VDI40, & ANY SPECIALS POSSIBLE.

Operating Manual For Bar Puller

- 1) The self-centering chuck stops.
- 2) After positioning the jaws, 3 to 5mm less than the size of the bar diameter then clamp the bar.
- 3) The self-centering chuck opens.
- 4) The bar puller pulls the bar.
- 5) The self-centering chuck holds the bar.
- 6) The bar puller comes out.
- 7) The job cycle continue.