



QUICK CHANGE DRILLING & TAPPING CHUCK

TYPE : QCDTC

SIZE : 2, 3 & 4

Vertical as well as Horizontal Applications:

- Drilling
- Counterboring
- Chamfering
- Reaming
- Tapping

Suitable for :

- Drilling Machines
- Radial Drilling Machines
- Lathe Machines
- Tool Room Milling Machines
- M1TR(R8) Vertical Milling Machines.



KTA Spindle Toolings

Works : 246/9, Hinjewadi, Near Tata Johnson,
Tal. Mulshi, Dist. Pune. Pin - 411 057.
(MAHARASHTRA) **INDIA.**

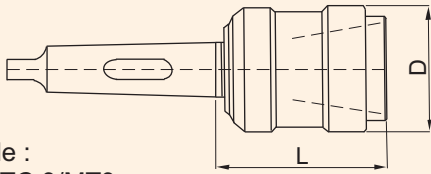
Tel. Works : +91 - 20 - 64001283, 20270680
Fax Works : +91 - 20 - 66740038, 66740039
E-mail : info@ktaspindletoolings.com
sales@ktaspindletoolings.com
exports@ktaspindletoolings.com

Visit us at : www.ktaspindletoolings.com



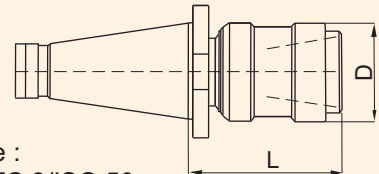
TYPE QCDTC SIZE : 2, 3 & 4

Chuck Type **QCDTC../MT..**



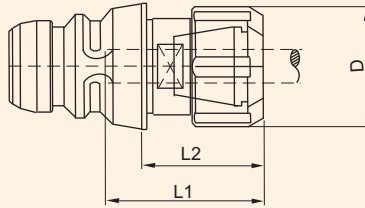
Ordering Example :
KTA Chuck QCDTC 3/MT3

Adaptor Type **QCDTC../ISO..**



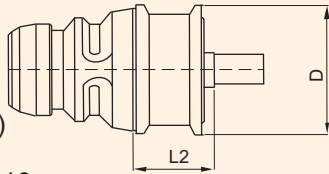
Ordering Example :
KTA Chuck QCDTC 3/ISO 50

Adaptor Type **QCCCA../E..** (Quick Change Collet Chuck Adaptor suitable for ER Type Collets.)



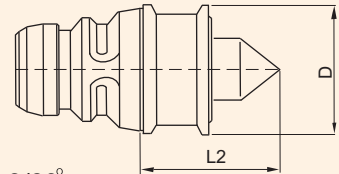
Ordering Example :
KTA Adaptor QCCCA 3/RD32

Adaptor Type **QCDCA../B..**
(Quick Change Drill Chuck Adaptor suitable for keyless Drill Chucks.)



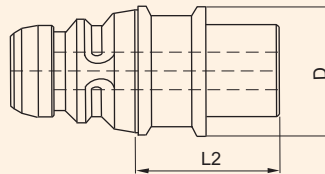
(For Keyless Drill Chucks)
Ordering Example :
KTA Adaptor QCDCA 3/B16

Adaptor Type **QCCD../60°.**
Dead Center (Quick Change Center Dead suitable for toolroom works.)



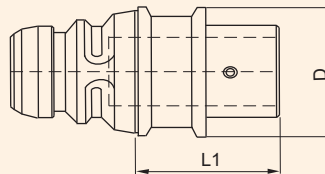
Ordering Example :
KTA Adaptor QCCD 3/60°

Adaptor Type **QCDA../MT..** (Quick Change Drill Adaptor suitable for Morse Taper Drills.)
With Internal Morse Taper DIN228



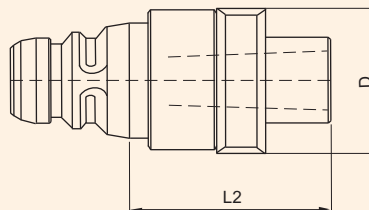
Ordering Example :
KTA Adaptor QCDA 3/MT3

Adaptor Type **QCADA../PB..** (Quick Change Adjustable Drill Adaptor suitable for Morse Taper Drills for pre-setting off the machine, Should be used with adjustable adaptors TR28X2 or TR16X2.)



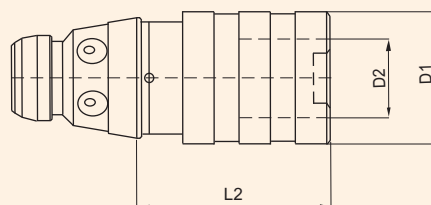
Ordering Example :
KTA Adaptor QCADA 3/PB28

Adaptor Type **QCFRH../MT..** (Quick Change Floating Reamer Holder suitable for Reamers, with self centering radial parallel float) with Radial Parallel Float with Internal Morse Taper DIN228



Ordering Example :
KTA Adaptor QCFRH 3/MT3

Adaptor Type **QCTAH../.** (Quick Change Tap Adaptor Housing suitable for tapping with WES Tap Adaptors.)



Ordering Example :
KTA Adaptor QCTAH 4/3

D2-Dia.19,31 & 48mm
Refer WES/B Table

TYPE QCDTC SIZE : 2, 3 & 4

Chuck Size	Suitable Adaptor	D Dia.	Morse Taper				ISO Taper	
			MT 2 L	MT 3 L	MT 4 L	MT 5 L	ISO 40 L	ISO 50 L
QCDTC 2	SIZE 2	50	75	75	–	–	96	–
QCDTC 3	SIZE 3	60	–	88	89	–	109	99
QCDTC 4	SIZE 4	72	–	–	102	102	122	112

Adaptor Size	Suitable Chuck	D Dia.	Tool Insertion Length L1		RD16/E16 Collet 1-10mm. L2	RD32/E32 Collet 3-20mm. L2	RD40/E40 Collet 4-26mm. L2	Suitable Spanner
			min.	max.				
QCCCA 2/E16	QCDTC 2	42	30	50	42	–	–	Gs25
QCCCA 3/E..	QCDTC 3	50	40	60	42	51	–	E32
QCCCA 4/E..	QCDTC 4	60	40	60	–	63	63	E40

Adaptor Size	Suitable Chuck	D Dia.	Stub Taper DIN238 'L2'		Adaptor Size	Suitable Chuck	D Dia.	L2
			B12	B16				
QCDA 2	QCDTC 2	42	21.5	26	QCCD 2	QCDTC 2	42	46
QCDA 3	QCDTC 3	50	26	26	QCCD 3	QCDTC 3	50	65
QCDA 4	QCDTC 4	60	39	39	QCCD 4	QCDTC 4	60	78

Adaptor Size	Suitable Chuck	D Dia.	Tool Location (Morse Taper)			
			MT 1 L2	MT 2 L2	MT 3 L2	MT 4 L2
QCDA 2	QCDTC 2	42	18	30.5	–	–
QCDA 3	QCDTC 3	50	20.5	20.5	38.5	–
QCDA 4	QCDTC 4	60	33.5	33.5	33.5	56

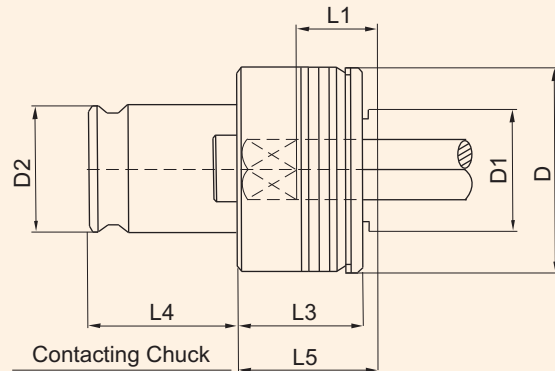
Adaptor Size	Suitable Chuck	D Dia.	Adjustable Adaptor	Tool Location Morse Taper	L2
QCADA 2/16	QCDTC 2	42	16	MT 1	32
QCADA 3/28	QCDTC 3	50	28	MT 2	74
QCADA 4/36X28	QCDTC 4	60	36X28	MT 3	70

Adaptor Size	Suitable Chuck	D Dia.	Tool Location Morse Taper	Float in mm.	L2
QCFRH 2	QCDTC 2	50	MT 2	1	74
QCFRH 3	QCDTC 3	60	MT 3	1.5	91
QCFRH 4	QCDTC 4	72	MT 4	1.5	115

Adaptor Designation Size	Suitable Adaptors		Suitable For Chuck	Length Compens. comp. Exp.		D1 Dia.	L2	Adaptor Designation Size	Suitable Adaptors		Suitable For Chuck	Length Compens. comp. Exp.		D1 Dia.	L2
	Size	Tread dia.		Size	Tread dia.				Size	Tread dia.					
QCTAH 2/1	WES 1B	M3-M12	QCDTC 2	7.5	7.5	36	42	QCTAH 3/3	WES 3B	M14-M33	QCDTC 3	20.0	20.0	78	126
QCTAH 2/2	WES 2B	M8-M20	QCDTC 2	12.5	12.5	53	72	QCTAH 4/1	WES 1B	M3-M12	QCDTC 4	7.5	7.5	36	42
QCTAH 3/1	WES 1B	M3-M12	QCDTC 3	7.5	7.5	36	42	QCTAH 4/2	WES 2B	M8-M20	QCDTC 4	12.5	12.5	53	66
QCTAH 3/2	WES 2B	M8-M20	QCDTC 3	12.5	12.5	53	66	QCTAH 4/3	WES 3B	M14-M33	QCDTC 4	20.0	20.0	78	121


TYPE WES/B

Adaptor Type **WES/B**



Shank Dia. & Square size of the tap to be specified.
 Ordering Example :
 KTA - Adaptor WES / 2B M20 Dia.14x11.2□, Qty.-2 Nos.

Adaptor Designation	For Taps	Shank Ø	Suitable For Chuck Size	D Ø	D1 max. Ø	D2 Ø	L1	L3	L4	L5
WES/1B	M 3-M 12	3.5-11.3	QCTAH./1	32	19	19	17	25	21.5	25
WES/2B	M 8-M 20	7.0-18.0	QCTAH./2	50	30	31	30	31	35.0	34
WES/3B	M 14-M 33	11-28.0	QCTAH./3	72	48	48	44	41	55.5	45

Features :  **Quick Chuck Drilling & Tapping Chuck** Type : **QCDC**

With its appropriate Quick Change Adaptors for Drilling, Counterboring, Reaming & Tapping operations, is the ideal quick change system. This system is capable to perform economically and with the highest accuracy, an unlimited number of operations at a single clamping of the component.

The adaptor locks automatically in the main body after the insertion, ejects positively when required, High concentricity with no axial and radial play, extremely short movements when changing the tools, tool change can be effected safely and efficiently with the spindle running up to 2000 r.p.m or stationary. It can be used for **Right hand** or **Left hand** rotations, for **Horizontal** or **Vertical** applications.

- ☆ Adaptor Type **QCCCA** : **Quick Change Collet Chuck Adaptor** suitable for ER Type Collets.
- ☆ Adaptor Type **QCDCA** : **Quick Change Drill Chuck Adaptor** suitable for keyless Drill Chucks.
- ☆ Adaptor Type **QCDA** : **Quick Change Drill Adaptor** suitable for Morse Taper Drills.
- ☆ Adaptor Type **QCADA** : **Quick Change Adjustable Drill Adaptor** suitable for Morse Taper Drills for pre-setting off the machine, Should be used with adjustable adaptors TR28X2 or TR16X2.
- ☆ Adaptor Type **QCFRH** : **Quick Change Floating Reamer Holder** suitable for Reamers, with self centering radial parallel float.
- ☆ Adaptor Type **QCCD/60** : **Quick Change Center Dead** suitable for Toolroom works.
- ☆ Adaptor Type **QCTAH../..** : **Quick Change Tap Adaptor Housing** suitable for tapping with WES Tap Adaptors.

DEALERS: