



Bar Puller

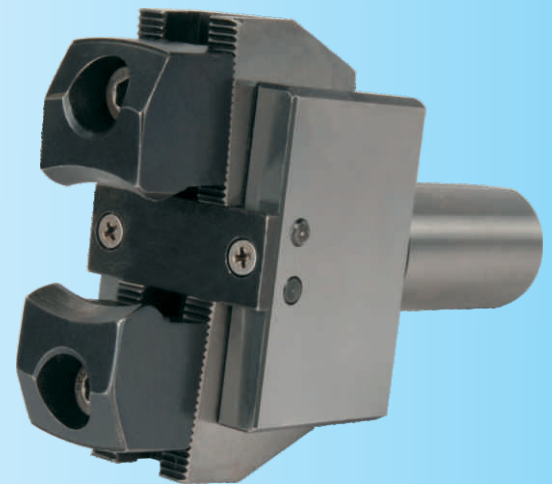
▣ Features :

- 'KTA' Bar Puller is unique with bar pulling capacity from 6.0 mm to 50.0 mm.
- This occupies only one station in the Turret.
- This is very good for small to medium sizes batch production.
- In many cases you can avoid bar feeders which occupies lot of space.
- Most suitable for CNC Lathes; CNC Turn-Mill Centers.

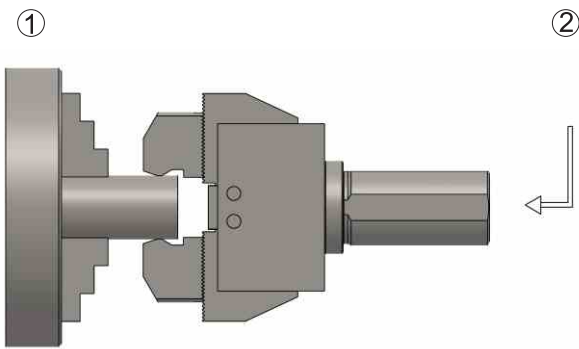
▣ Available In Mountings :

Standard Cylindrical Dia. 20, 25, 32 & 40 mm
(As per Din 1835 B+E)
(VDI & spl mounting on request).

- Please go through the schematic diagram which shows the simplicity of the holder function.

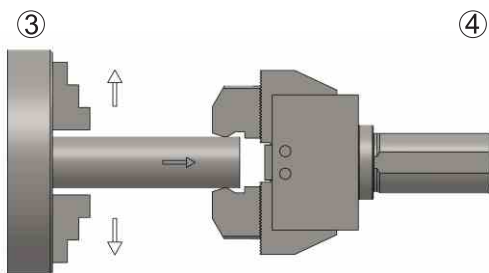


Operating Manual For Bar Puller



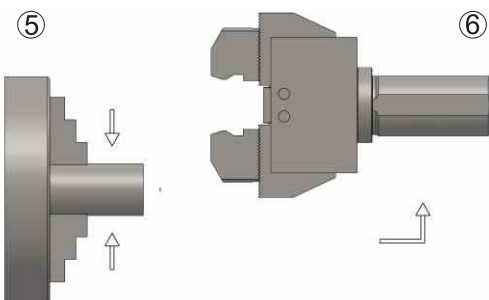
1) The self-centering chuck stops.

2) After positioning the jaws, 3 to 5 mm less than the size of the bar diameter then clamp the bar.



3) The self-centering chuck opens.

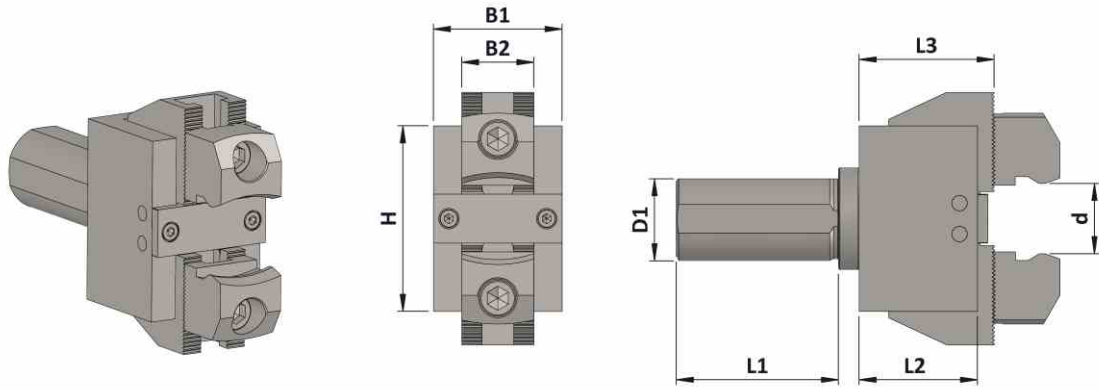
4) The bar puller pulls the bar.



5) The self-centering chuck holds the bar.

6) The bar puller comes out.

7) The job cycle continues.



Accessories

Bar Puller (For CNC Lathes)

| Item Name | Item Code | d | D1 | B1 | B2 | H | L1 | L2 | L3 |
|------------------|-----------------|--------|----|----|----|----|----|----|----|
| DIA25 BAR PULLER | K10161367301127 | 6 - 50 | 25 | 50 | 28 | 72 | 55 | 46 | 51 |
| DIA32 BAR PULLER | K10162367301127 | 6 - 50 | 32 | 50 | 28 | 72 | 55 | 46 | 51 |

Note: All Dimensions are in mm